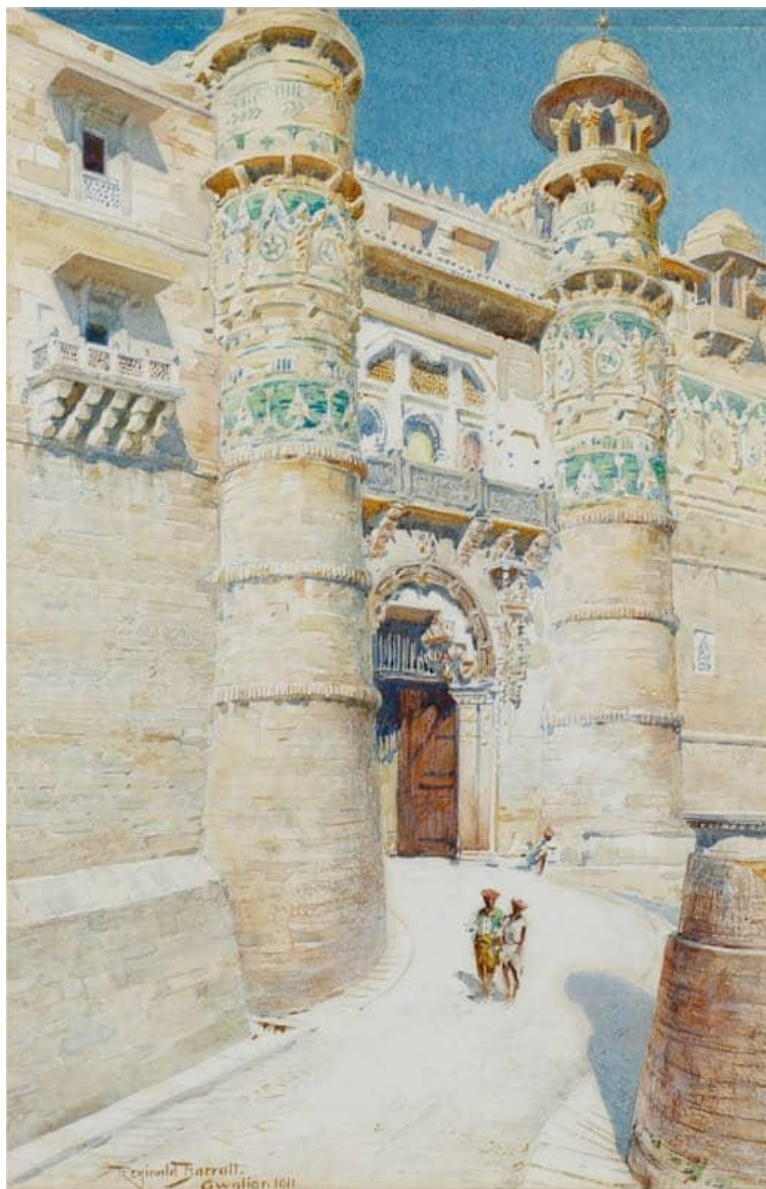


Reginald Barrett



SOLD

Gateway to the fort, Gwalior

Reference: 10934

KAREN TAYLOR

FINE ART

Dimensions:

Height: 23.40 cm / 9¼ in

Width: 15.80 cm / 6¼ in

Signed, inscribed and dated l.l.: Reginald Barrett./Gwalior./1911, watercolour over traces of pencil, in a gilt frame

23.4 x 15.8 cm.; 9 ¼ x 6 ¼ inches

Frame size 38 x 29 cm.; 14 7/8 x 11 ½ inches

Provenance

Hartnoll and Eyre;

Private collection, U.K. until 2020

Barrett was a painter of landscapes and architectural subjects. He had been articled to the architect Norman Shaw and then studied in Paris under Lefèbvre and Bouguereau. He worked as an illustrator for The Graphic and The Daily Graphic.

He was an inveterate traveller in the Middle East and Italy and was commissioned by Queen Victoria to paint her favourite view in Florence. From 1885 he exhibited at the Royal Academy, New Watercolour Society and New Gallery, becoming AWRS in 1901 and RWS in 1913. He was also a Fellow of the Royal Geographical Society.

Barrett's one-man shows A Collection of Watercolour Drawings Illustrating India and Egypt was held at the Fine Art Society in 1894 and Watercolours of India at the Leicester Galleries, London in 1912.

The fort at Gwalior was the favourite building of Babur, the first Mughal emperor of India.